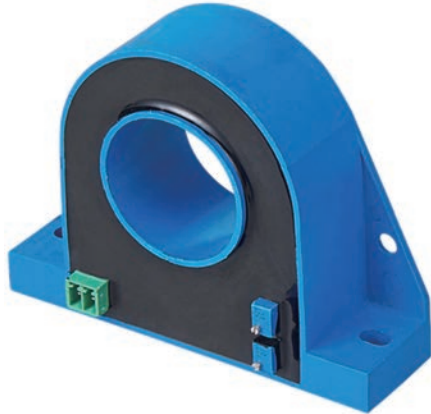


## PTD32 current transducer

### OVERVIEW

The PTD32 series are AC current transducers. The CT can be mounted to existing panels, such as control centers or load centers, to measure or monitor wattage.



### APPLICATIONS

Phase fired controlled heaters
Quickly varying motor loads
Chopped wave form drivers
Current measurements
Split Core design
4-20 mA DC output; 18-30VDC powered
21*51 mm windows size
0-600A current customized
Accuracy 1%
Frequency range 20 Hz - 5 KHz
Weight 500g

### ADVANTAGE

Easy installation
Excellent linearity over the whole range
Compact case
High isolation between primary and secondary

### MECHANICAL

MODEL	INPUT CURRENT	AVAILABLE OUTPUT
PTD32-100	100 A	POWER SUPPLY@18-35V CURRENT OUTPUTS @4-20mA
PTD32-200	200 A	
PTD32-500	500 A	
PTD32-800	800 A	
PTD32-1000	1000 A	

